

**SPENCER FANE**  
BRITT & BROWNE LLP  
*Attorneys & Counselors at Law*

COURTNEY LINNEY, PARALEGAL  
DIRECT DIAL: (303) 839-3778  
clinney@spencerfane.com

File No. 5114318.0008

December 26, 2014

Division of Local Government  
1313 Sherman Street, Room 521  
Denver, Colorado

DLG E-Portal

Arapahoe County Assessor  
Administration Building  
5334 S. Prince Street  
Littleton, CO 80120

[assessor@arapahoegov.com](mailto:assessor@arapahoegov.com)

Arapahoe County Clerk and Recorder  
5334 S. Prince Street  
Littleton, CO 80120

[clerk@arapahoegov.com](mailto:clerk@arapahoegov.com)

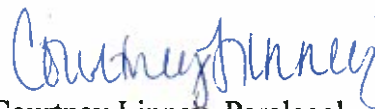
**Re: Valley Club Pointe Metropolitan District  
Boundary Map**

Dear Sir or Madam:

Pursuant to Section 32-1-306, C.R.S., attached to this correspondence is a current map of the boundaries of the above-referenced District.

Please do not hesitate to contact our office should you have any questions or require additional information.

Sincerely,

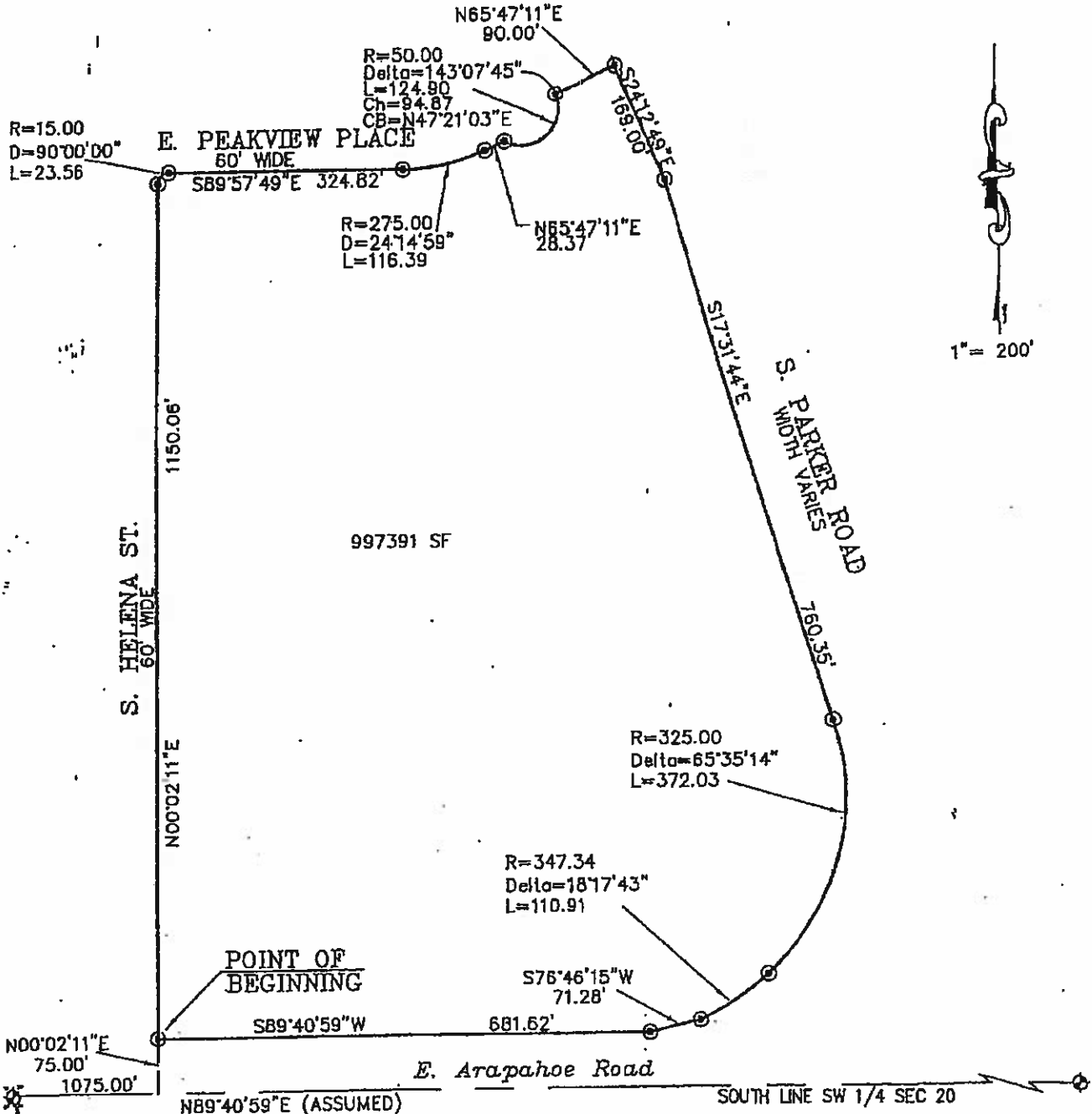
  
Courtney Linney, Paralegal

Encl.

1700 Lincoln Street, Suite 2000  
Denver, Colorado 80203-4554  
(303) 839-3800 www.spencerfane.com Fax (303) 839-3838

Denver 1195326.1

EXHIBIT A  
Map



SW CORNER SECTION 20 FOUND  
3 1/4" BRASS CAP LS 13486 IN  
RANGE BOX

S 1/4 CORNER SECTION 20 FOUND  
3 1/4" ALUMINUM CAP LS 29420  
IN RANGE BOX